






# IMPROVING WI-FI 8 LATENCY WITH COORDINATED SPATIAL REUSE

David Nunez , Francesc Wilhelmi , Lorenzo Galati-Giordano , Giovanni Geraci , and Boris Bellalta 

## ABSTRACT

IEEE 802.11 networks continuously adapt to meet the stringent requirements of emerging applications like cloud gaming, eXtended Reality (XR), and video streaming services, which require high throughput, low latency, and high reliability. To address these challenges, Coordinated Spatial Reuse (Co-SR) can potentially contribute to optimizing spectrum resource utilization. This mechanism is expected to enable simultaneous transmissions, thereby boosting spectral efficiency in dense environments and increasing the overall network performance. In this paper, we shed light on the performance of Co-SR for Wi-Fi 8 networks. For that, we propose an implementation of Co-SR aligned with ongoing Wi-Fi 8 standardization efforts. The evaluation is done on a Wi-Fi simulator, which allows us to study the performance of the proposed Co-SR mechanisms in relevant scenarios. The results obtained in a Wireless Local Area Network (WLAN) consisting of four APs show delay reduction with Co-SR ranging from 31% to 95% when compared to Distributed Coordination Function (DCF).

## INTRODUCTION

Emerging applications such as eXtended Reality (XR), high-quality holographic video, and zero-delay file exchange for remote collaboration require wireless networks to extend their capabilities further. These applications demand high throughput, low latency, and highly reliable connections to ensure seamless user experiences [1]. At the same time, technologies like Wi-Fi continue to play a dominant role in providing connectivity for these use cases, given the increasing reliance on unlicensed spectrum [2]. Dense Wi-Fi deployments, where multiple Access Points (APs) share the same frequency resources, experience contention and collisions, leading to degraded throughput, increased latency, and compromised reliability. New techniques are necessary to optimize channel access and resource utilization.

To address the challenges imposed by next-generation applications in high-density Wireless Local Area Network (WLAN) scenarios, the future IEEE 802.11bn amendment [3] will introduce Multi-Access Point Coordination (MAPC). This framework is envisioned to enhance the overall latency and reliability performance by

efficiently using the channel. The definition of MAPC started with IEEE 802.11be [4] but was then postponed until IEEE 802.11bn [5]. Since then, multiple flavors of MAPC have been proposed to address, among others, the coordination protocols and signaling, setup establishment, and transmission management [6], [7].

MAPC enables the introduction of different methods that perform coordinated resource allocation, such as Coordinated Time Division Multiple Access (Co-TDMA), where APs agree to split time resources [8], or Coordinated Restricted Target Wake Time (Co-RTWT) where scheduled, interference-free communication time slots are reserved for devices, improving power efficiency and real-time application performance [9]. In certain scenarios, higher performance can also be achieved by enabling simultaneous transmissions through Coordinated Spatial Reuse (Co-SR) or Coordinated Beamforming (Co-BF). Among these techniques, Co-SR stands out as a particularly promising scheme for reducing latency and, in most scenarios, increasing throughput [10].

Closer in spirit to this work, [11] introduced a framework in which compatible multi-AP groups are scheduled to perform simultaneous transmissions within a TDMA-slotted Transmission Opportunity (TXOP). When it comes to Co-SR, the authors in [12] evaluated the throughput of networks implementing Co-TDMA and Co-TDMA with SR (Co-TDMA/SR), showing that Co-TDMA/SR leads to throughput gains between 50% and 140%, depending on the scenario, when compared to Co-TDMA. As for the analytical characterization of Co-SR, a model based on Markov chains is introduced in [13], to compute the Co-SR's throughput in comparison to the Distributed Coordination Function (DCF).

While some works have analyzed the coordination gains in terms of throughput, a detailed assessment of delay performance in MAPC networks—particularly when Co-SR is employed—remains missing. In [10], the performance of a MAPC framework utilizing Co-SR is evaluated, providing a detailed analysis and closed-form expressions for throughput computation. This work builds upon that study by enhancing the previously proposed Co-SR group creation algorithm, aiming to find an optimal solution that balances capacity and fairness. Furthermore, it presents a more in-depth evaluation of Co-SR through

David Nunez (corresponding author), Francesc Wilhelmi, Giovanni Geraci, and Boris Bellalta are with the Department of Engineering, Universitat Pompeu Fabra, 08018 Barcelona, Spain; Lorenzo Galati-Giordano is with the Radio Systems Research, Nokia Bell Labs, 70469 Stuttgart, Germany.

simulations, which allows assessing the delay gains achieved in comparison with DCF.

By way of a summary, this work proposes a Co-SR implementation for Wi-Fi 8 networks that leverages spatial reuse groups of AP-Station (STA) pairs. These groups are selected by solving an optimization problem that maximizes the transmission capacity, considering their transmission probability and guaranteeing that all the AP-STA pairs are granted a minimum number of transmission opportunities, so that fairness is preserved. A performance evaluation is carried out for enterprise-like deployments with four APs and randomly distributed stations, allowing us to show that our proposed Co-SR design outperforms the baseline DCF mechanism. We also analyze the impact of limiting the maximum number of simultaneous multi-AP transmissions to two, as currently proposed for IEEE 802.11bn, versus an unconstrained number of coordinating APs, which allows us to explore the potential of Co-SR beyond Wi-Fi 8.

## CHALLENGES AND DIRECTIONS OF MAPC AND Co-SR

MAPC aims to improve network performance by enabling collaboration among APs, reducing co-channel interference, and optimizing resource allocation. Unlike current Wi-Fi networks, where each AP manages its transmissions independently, MAPC introduces mechanisms that allow APs to share information, synchronize transmissions, and make joint decisions on channel access or power control. For its part, Co-SR optimizes spectrum utilization by enabling concurrent transmissions, which can significantly boost spectral efficiency, improving throughput, latency, and reliability. This is particularly beneficial in dense deployments, where traditional methods like DCF struggle to manage traffic efficiently, and queued packets suffer high delays.

### CHALLENGES

Implementing MAPC techniques presents several challenges, ranging from signaling overhead and scalability to fairness in scheduling and real-time adaptability. Addressing these challenges is crucial for ensuring that coordination mechanisms remain effective and scalable in dense and heterogeneous network environments. Below, we outline some of the main open challenges associated with MAPC and Co-SR, highlighting key issues that need to be addressed for a successful implementation.

- *Signaling Overheads:* Coordination requires control messages for the discovery and setup of the mechanism, plus periodic exchanges of enabling information (e.g., interference levels, transmission schedules, or resource allocation). This can introduce significant signaling overhead, particularly in dense Wi-Fi deployments where multiple APs and STAs operate simultaneously.
- *Scalability:* As the number of APs and STAs increases, scheduling and decision-making become more challenging, as the complexity of coordination groups grows in a combinatorial manner. Device heterogeneity exacerbates these issues, as modern

networks typically comprise Wi-Fi 4 to Wi-Fi 7 devices with different capabilities.

- *Fairness in Resource Allocation:* In MAPC, where scheduling decisions are explicitly coordinated, prioritizing certain AP-STA links to optimize overall network efficiency may unintentionally starve others of resources. Ensuring a fair balance between efficiency and equitable access remains a research challenge. When it comes to the specific challenges associated with the implementation of Co-SR, we outline the following ones:
  - *Interference Measurement:* Accurate measurement of interference levels is crucial to make informed decisions about spatial reuse opportunities. This requires collecting Received Signal Strength Indicator (RSSI) from neighboring APs and STAs, which can introduce significant overhead, especially in high-density environments. The frequency of these measurements, the type of information collected, and the processing requirements must be carefully balanced to avoid excessive network overhead while maintaining accurate interference estimation. Environmental dynamics further strain system responsiveness, i.e., changing channel conditions render pre-computed coordination strategies obsolete within near-second timescales, making real-time measurement and adaptation even more complex.
  - *Modulation and Coding Scheme (MCS) Selection:* The effectiveness of Co-SR depends heavily on selecting near-optimal MCS for transmissions that overlap in the same geographical area, so that the Bit Error Probability (BER) is effectively reduced while preserving high enough data rates. Since MCS selection depends on Signal-to-Interference-plus-Noise Ratio (SINR), designing adaptive algorithms that can dynamically adjust MCS in response to changing network conditions is still an open research problem.
  - *Scenario Dependency:* Co-SR's effectiveness depends on network topology, device density, mobility, and traffic patterns. In dense environments with heavy congestion, aggressive spatial reuse can lead to excessive interference, reducing overall network performance instead of improving it, while in sparsely populated networks, coordination benefits may be minimal, raising questions about under which conditions Co-SR could be applied.
  - *Coordination Scope and Decision-Making:* Deciding the subset of devices that coordinate and their allocated resources is non-trivial. While offering greater control, centralized approaches may need additional infrastructure to exchange the signaling information and enforce commands, whereas distributed approaches require APs to make decisions while avoiding conflicts independently. Achieving a balance between control and autonomy is essential for effective spatial reuse in large-scale Wi-Fi networks.

## IEEE 802.11bn DIRECTIONS

The IEEE 802.11bn Task Group (TGbn) is leading the development of the new amendment. For MAPC, TGbn will define a foundational framework, including frames and basic procedures, while leaving room for manufacturers to implement their solutions. Furthermore, the list of MAPC features is still under discussion, being so far Co-SR, Co-BF, Co-TDMA, and Co-RTWT the most feasible options. Based on recent contributions and discussions to the TGbn, it is expected that MAPC features will be implemented as follows. APs participating in MAPC can utilize management frames to advertise and discover the capabilities or parameters of specific schemes. Once APs identify potential coordination partners, they can exchange individually addressed management frames to establish agreements and negotiate scheme parameters. For interoperability purposes, 802.11bn should also specify AP-to-AP frame formats, allowing APs to coordinate transmissions either over-the-air or via the Distribution System (DS). Regarding Co-SR, it is expected to operate with a maximum of two simultaneous transmissions, leaving a higher number for future amendments.

### PROPOSED Co-SR MECHANISM MODEL

Our envisioned Co-SR approach builds upon DCF while incorporating group formation and periodic updates based on exchanged RSSI reports between APs to calculate the set of feasible transmitter-receiver pairs. Co-SR decisions (e.g., scheduling) occur on a per-TXOP basis, aided by over-the-air signaling. In addition, longer-term adjustments (e.g., every few seconds) to the coordination groups enable the system to adapt to user mobility and changing wireless conditions by re-assessing the feasibility of existing SR groups using refreshed channel-quality information, while maintaining a balance between control overhead and performance gains.

### Co-SR OPERATION

We propose a Co-SR mechanism that enhances network throughput and latency by enabling concurrent transmissions among groups of coordinated APs. This mechanism, inspired by the ongoing discussions at the TGbn, operates within the DCF framework, facilitating TXOP sharing among compatible APs (see the “Multi-AP Group Formation” section). Specifically, when an AP—designated as the *sharing AP*—wins the channel contention (i.e., its backoff counter reaches zero before the one from the other contenders), it initiates a multi-AP transmission. The sharing AP selects one of its associated STAs (according to the scheduling mechanism in the “Multi-AP Transmissions Scheduling” section) and triggers a pre-defined group of AP-STA pairs from other Basic Service Sets (BSSs) that are compatible with it for simultaneous transmission. This phase, lasting for a duration of  $T_{MAPC}$ , involves channel reservation and the exchange of information about the set of devices and transmission parameters for the upcoming coordinated TXOP. These parameters can include bandwidth, MCS<sup>1</sup>, and TXOP duration.

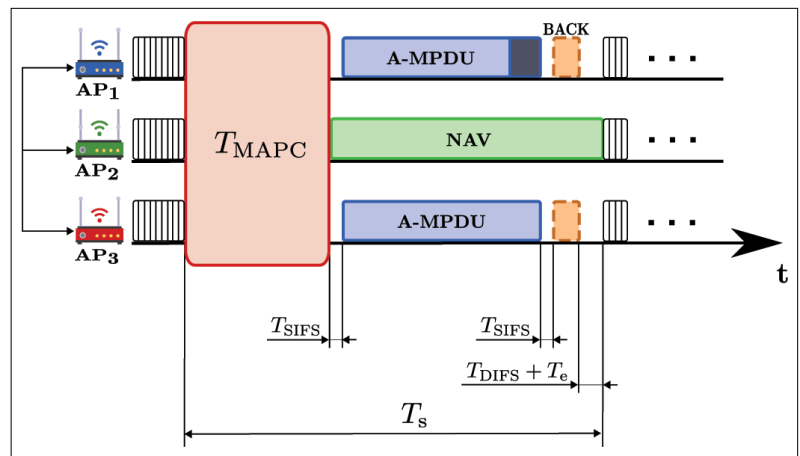


FIGURE 1. Example of the proposed MAPC operation in a small overlapping BSS deployment where AP<sub>1</sub> and AP<sub>3</sub> are selected to participate in a coordinated TXOP, due to their spatial reuse compatibility.

An example of a Co-SR transmission is illustrated in Fig. 1. Initially, coordinated APs (AP<sub>1</sub>, AP<sub>2</sub>, and AP<sub>3</sub>) contend for accessing the channel using DCF. Upon winning the TXOP, one of the coordinated APs (e.g., AP<sub>1</sub>) initiates a multi-AP transmission during the  $T_{MAPC}$ . From that moment on, a coordinated transmission (e.g., involving AP<sub>1</sub> and AP<sub>3</sub>) takes place through the exchange of Aggregate MAC Protocol Data Units (A-MPDUs) and Block ACKs (BACKs) between the devices of each involved BSS. Meanwhile, non-transmitting APs (e.g., AP<sub>2</sub>) set their Network Allocation Vector (NAV) and freeze their backoff countdowns.

### MULTI-AP GROUP FORMATION

An SR group consists of several APs and STAs pairs that are compatible, i.e., pairs of devices that can transmit simultaneously without causing the SINR at the receiver to fall below a threshold  $\gamma_{CE}$  (see the “Performance Evaluation” section for further details). The groups are defined based on the RSSI perceived by each receiver from the neighboring APs.<sup>2</sup> These groups are computed by a logical controller, which may be physically located within an AP, an external server, or even in the cloud. The controller is responsible for periodically receiving fresh RSSI data, recalculating the Co-SR groups, and disseminating updates to all APs in the network. In low-mobility Wi-Fi scenarios, RSSI variations occur at a slow timescale, minimizing the overhead associated with data acquisition and transmission to the controller. While the computation of Co-SR groups is centralized, our proposed mechanism ensures that channel access and per-transmission signaling adhere to standard 802.11 operations. This design guarantees fair coexistence with other existing Wi-Fi networks.

To manage the group formation efficiently, we start by identifying all possible AP-STA (associated) pairs. From there, we explore different ways to group them so they can transmit simultaneously. As mentioned earlier, managing coordination groups becomes increasingly challenging in dense Wi-Fi networks, where the number of coordinated devices can be large. Hence, reducing the number of devices per group can simplify things, making coordination more efficient. While the balance between performance and computational

<sup>1</sup> The selection of the appropriate MCS is jointly optimized across the participating devices, achieving an optimal trade-off between data rate and error probability under the interference caused by simultaneous transmissions.

<sup>2</sup> Owing to time division duplexing and channel reciprocity, downlink RSSI can be estimated from measurements on uplink frames (data or ACK frames).

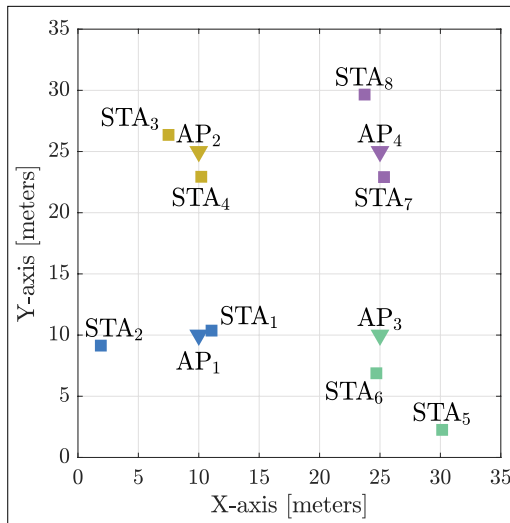


FIGURE 2. Example Deployment that consists of four APs separated to a distance  $d_{AP-AP} = 15$  meters. Two STAs are associated to each AP.

complexity is beyond the scope of this work, we outline two possible approaches for group formation, based on whether or not the number of members per group is limited:

1. Unconstrained (UNC): There is no limit on the size of the groups that can perform simultaneous transmissions, allowing as many AP-STA pairs as possible to transmit together.
2. IEEE 802.11bn Approach (MAX2): Following directions from TGBn discussions, groups for performing simultaneous transmissions are restricted to a maximum of two AP-STA pairs at a time.

### MULTI-AP TRANSMISSIONS SCHEDULING

Not all the compatible groups of AP-STA pairs lead to the same performance and some allow more efficient data transmission than others. For that reason, to decide on the scheduling of transmission groups, we focus on: 1) how often each group accesses the channel (because one of its members has won the contention), and 2) how many packets can be aggregated by the AP-STA pairs in those groups. While selecting a high number of devices in a given simultaneous transmission is preferable, the quality of their individual transmissions depends on the total interference received from the other transmitters within the group, which also affects the chosen MCS. Thus, we define the quality of each group as the product of its transmission probability and the estimated number of packets transmitted within a given TXOP duration by the AP-STA pairs it contains.

The selection of the best groups to be scheduled is then computed by solving the optimization problem that finds those groups that maximize the product of the aforementioned number of transmitted packets considering all the selected groups in the process. Furthermore, to guarantee that all the AP-STA pairs are granted a minimum number of transmission opportunities, we establish a constraint for all the AP-STA pairs to be selected the same number of times. For the sake of simplicity and without loss of generality, we set

this value equal to one for the remainder of this paper, which means that, for a given deployment, an AP-STA pair will only appear once in a single group.

## PERFORMANCE EVALUATION

We developed a MATLAB-based simulator designed to evaluate the performance of next-generation Wi-Fi networks, with a particular focus on features of the IEEE 802.11bn amendment.<sup>3</sup>

### SIMULATION SCENARIO AND PARAMETERS

We consider four overlapping BSSs deployed throughout a squared scenario (see deployment in Fig. 2), with an inter-AP distance of  $d_{AP-AP}$  meters, and where downlink transmissions are held. The APs contend to access the same 80 MHz channel using DCF, so packet collisions may occur during that process. We build upon the system model presented in [10], where a detailed description of the channel access and collision mechanisms is provided, as well as the signaling overheads involved in the MAPC process.

We consider that each AP has two associated STAs. The STAs are randomly placed  $d_{AP-STA}$  meters away from their corresponding AP. Each AP manages separate packet queues for its connected STAs. Without loss of generality, we assume each STA handles only a single data stream at a time. We analyze scenarios where the traffic load per STA is 90% of the throughput achievable by the STA with the lowest MCS for a given scenario when DCF is employed. This setup ensures that the network operates under high-load conditions while preventing traffic saturation at the devices. All queued packets are processed in the order they arrive, following a First-In, First-Out (FIFO) rule. We consider two traffic models:

1. *Poisson Traffic*: This model represents a continuous flow of packets. The time between packet arrivals varies randomly, following an exponential distribution, meaning some packets may arrive quickly, while others may be spaced further apart.
2. *Bursty Traffic*: Typical internet traffic, like web browsing or cloud services, generates data in bursts rather than a continuous stream. This behavior is well represented by an ON/OFF Markovian model, where data packets are sent only during active (ON) periods, while idle (OFF) periods introduce gaps in transmission. The duration of both ON and OFF periods, defined as  $T_{ON}$  and  $T_{OFF}$ , respectively, follows an exponential distribution.

The transmission rate achieved in a given AP-STA transmission depends on the selected MCS (we consider 802.11be MCS values), which is computed from the estimated RSSI at the receiver. The path loss is modeled using the IEEE 802.11ax Task Group model for Enterprise Scenarios [14]. Besides, we consider that all the APs use the same fixed transmit power. As a result, stations close (far) from their AP are served using a higher (lower) MCS. Moreover, the maximum number of aggregated packets in each A-MPDU depends on the MCS and the maximum TXOP duration ( $T_{max}$ ). For an SR transmission to be successful, the SINR at the receiver must be above a predefined capture effect threshold,  $\gamma_{CE}$  [15].

<sup>3</sup> The simulator is openly available at <https://github.com/dncuadrado/802.11bn-CoSR-Simulator>.

Table 1 collects the simulation parameters used in the evaluation.

### EXAMPLE DEPLOYMENT

Let us examine the delay experienced by the STAs in the deployment illustrated in Fig. 2, where four APs are positioned, each maintaining a separation of  $d_{AP-AP} = 15$  meters (square side) from the others. This particular distance allows for the generation of appealing Co-SR interactions among BSSs. Fig. 3 presents the 99<sup>th</sup> percentile delay when using DCF, MAX2, and UNC under both Poisson and Bursty traffic models.

Notably, DCF is less efficient with Poisson traffic than with Bursty traffic, as it struggles to clear the queues when packets arrive in a continuous stream. In contrast, both MAPC-based approaches significantly reduce the 99<sup>th</sup> percentile delay compared to DCF, across all STAs and traffic models. For STA<sub>1</sub>, the delay under MAX2 is nearly identical (less than 1 ms difference) for Poisson and Bursty traffic, causing both markers (orange triangles) to overlap. The key advantage of MAPC over DCF stems from Co-SR's ability to enable concurrent transmissions, resulting in more efficient data delivery. Among the MAPC strategies, UNC achieves the best performance, reducing the delay by 95% compared to DCF, and 78% compared to MAX2 under Poisson traffic, while achieving reductions of 50% and 14% for Bursty traffic, respectively. This significant improvement is enabled by the ease of compatible AP-STA pairs grouping in this Co-SR-friendly deployment. In fact, only two groups are required to serve all eight STAs when no group-size constraints are imposed: {STA<sub>1</sub>, STA<sub>3</sub>, STA<sub>6</sub>, STA<sub>7</sub>} and {STA<sub>2</sub>, STA<sub>4</sub>, STA<sub>5</sub>, STA<sub>8</sub>}, resulting in an aggregate throughput gain of 284% over DCF and approximately 100% compared to MAX2.

### EFFECT OF THE INTER-AP DISTANCE

To gain deeper insights into these scenarios, we analyze packet delay across 100 different deployments, varying the inter-AP distance,  $d_{AP-AP}$ . In each deployment, STA positions are randomly placed. Traffic load is also adjusted to meet the abovementioned 90% condition.

Fig. 4 presents the 99<sup>th</sup> and 50<sup>th</sup> percentile delay for DCF, MAX2, and UNC under Poisson and Bursty traffic models and different inter-AP distances: in Fig. 4(a),  $d_{AP-AP} = 10$  meters, while in Fig. 4(b), we double the distance to  $d_{AP-AP} = 20$  meters. A consistent trend is observed in both cases: DCF consistently exhibits the highest delay, especially for Poisson traffic.

Furthermore, in Fig. 4(a), for Poisson traffic, MAX2 reduces the 99<sup>th</sup> percentile delay by approximately 50% (69.16 ms) with respect to DCF (137.66 ms), while UNC further improves performance, reducing the delay by 60% compared to DCF. This performance gap narrows for Bursty traffic, where the difference between the MAPC approaches and DCF is approximately 31%. Regarding the MAPC mechanisms, the distinction between them is primarily observed for Poisson traffic, with UNC exhibiting superior performance, achieving a 20% improvement in the 99<sup>th</sup> percentile delay. Their 50<sup>th</sup> percentile delays are comparable and significantly

Parameter	Description	Value
K	Number of BSSs	4
$S_k$	Number of STAs per BSS	2
$d_{AP-AP}$	Inter-AP distance [meters]	{10, 15, 20}
$d_{AP-STA}$	Distance between AP and STAs [meters]	{1, 10}
BW	Bandwidth [MHz]	80
$W_n$	Number of walls (every 10 meters)	{0, 1, 2}
$N_{sc}$	Number of data subcarriers	980
$N_{ss}$	Number of spatial streams	2
$f_c$	Carrier frequency [GHz]	6
$T_{OFDM}$	OFDM symbol duration [ $\mu$ s]	12.8
$T_{GI}$	Guard interval duration [ $\mu$ s]	0.8
$T_{max}$	Max. TXOP duration [ms]	5
$T_{MAPC}$	Coordination overheads [ $\mu$ s]	286
$T_{BACK}$	Block ACK duration [ $\mu$ s]	100
$T_{SIFS}$	Duration of a SIFS slot [ $\mu$ s]	16
$T_{DIFS}$	Duration of a DIFS slot [ $\mu$ s]	34
$T_c$	Duration of a collision slot [ $\mu$ s]	137
$T_e$	Duration of an empty slot [ $\mu$ s]	9
$CW_{min}$	Min contention window	15
$CW_{max}$	Max contention window	1023
$\gamma_{CE}$	Capture effect threshold [dB]	15
$P_{max}$	Transmission power [mW]	200
W	Noise power [Watts]	$3.2 \times 10^{-13}$
CCA	Clear Channel Assessment [dBm]	-82
$T_{ON}$	Bursty traffic ON period mean duration [ms]	1
$T_{OFF}$	Bursty traffic OFF period mean duration [ms]	10
$T_{sim}$	Simulation duration [s]	5
L	Length of single data frame [bits]	$12 \times 10^3$

TABLE 1. Simulation Parameters.

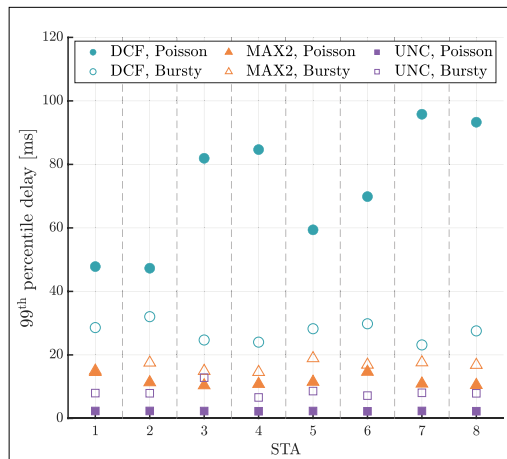


FIGURE 3. STA delay in the deployment of Fig. 2, for DCF, MAX2 and UNC with Poisson and Bursty traffic.

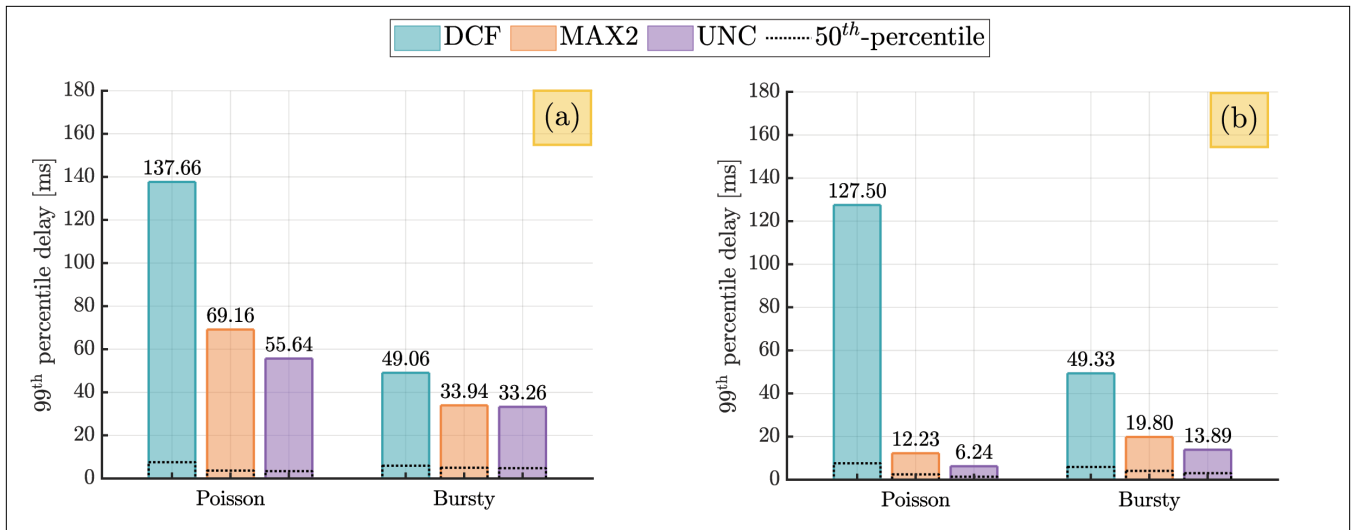


FIGURE 4. 99<sup>th</sup> and 50<sup>th</sup> percentile delay of packets for Poisson and Bursty flows in the 100 analyzed random deployments. Results were obtained for two different distances between APs: (a)  $d_{AP-AP} = 10$  meters and (b)  $d_{AP-AP} = 20$  meters.

lower than DCF's, demonstrating reductions of 52% and 19% for Poisson and Bursty traffic, respectively.

Finally, Fig. 4(b) examines a scenario where the inter-AP distance is doubled, creating more opportunities for large Co-SR groups. For Poisson traffic, UNC maintains the 99<sup>th</sup> percentile packet delay below 6.24 ms, compared to 12.23 ms for MAX2 and 127.50 ms for DCF. Finally, for Bursty traffic, MAX2 reduces the 99<sup>th</sup> percentile delay by 60% relative to DCF, while UNC achieves a greater reduction of 72%.

## CONCLUSION

In this paper, we introduced a multi-AP coordination mechanism based on the formation of spatial reuse groups of AP-STA pairs, i.e., groups of devices that can transmit simultaneously. Our study compared the network delay of Co-SR against DCF. We focused on the dependency of the Co-SR on the devices' location (accounting for diverse interBSS spatial reuse interactions) and the performance when the group size is constrained according to TGBn's discussions. Our results highlighted the effectiveness of Co-SR group formation and its potential for enhancing overall network performance, demonstrating a significant delay reduction by the proposed Co-SR approaches over DCF, which ranges from 31% to 95%.

Our analysis opens several directions for future research. First, the exploration of alternative group creation algorithms (e.g., based on traffic awareness or demand-proportional selection), adaptive power control, and TXOP-sharing strategies is expected to bring further gains for Co-SR. Such traffic-aware mechanisms could dynamically adapt transmission opportunities to the instantaneous load or delay sensitivity of each STA, improving both fairness and efficiency. Second, extending coordination to tune key 802.11 parameters—such as allowed transmission rates or contention parameters—may provide additional flexibility for scheduling and enhance latency and throughput performance. Third, to better understand the behavior of Co-SR in real deployments, it will be

important to conduct a deeper analysis of the associated signaling overheads and to evaluate larger-scale scenarios.

## ACKNOWLEDGMENT

The work of David Nunez, Francesc Wilhelmi, and Boris Bellalta was supported in part by the Wi-XR Project under Grant PID2021-123995NB-I00, in part by the TRUE-Wi-Fi Project (MCIU/AEI/FEDER, UE) under Grant PID2024-155470NB-I00, and in part by MICIU/AEI/10.13039/501100011033 under Grant MdM CEX2021-001195-M. The work of Lorenzo Galati-Giordano was supported in part by the UNITY-6G Project, funded from the European Union's Horizon Europe Smart Networks and Services Joint Undertaking (SNS JU) Research and Innovation Programme under Grant 101192650. The work of Giovanni Geraci was supported by Grant PID2021-123999OB-I00, Grant CNS2023-145384, and Grant PID2024-156488OB-I00.

## REFERENCES

- [1] G. Geraci et al., "Wi-Fi: Twenty-five years and counting," 2025, *arXiv:2507.09613*.
- [2] E. J. Oughton et al., "The future of wireless broadband in the peak smartphone era: 6G, Wi-Fi 7, and Wi-Fi 8," *IEEE Wireless Commun.*, vol. 32, no. 5, pp. 245–252, Oct. 2025.
- [3] (Jan. 2023). *IEEE 802.11-22/0078r3: 802.11 UHR Draft Proposed PAR*. Accessed: Jan. 2024. [Online]. Available: <https://mentor.ieee.org/802.11/dcn/23/11-23-0078-03-0uhr-uhr-draft-proposed-par.docx>
- [4] A. Garcia-Rodriguez et al., "IEEE 802.11be: Wi-Fi 7 strikes back," *IEEE Commun. Mag.*, vol. 59, no. 4, pp. 102–108, Apr. 2021.
- [5] L. Galati-Giordano et al., "What will Wi-Fi 8 be? A primer on IEEE 802.11bn ultra high reliability," *IEEE Commun. Mag.*, vol. 62, no. 8, pp. 126–132, Aug. 2024.
- [6] K. Lu et al., "Multi-AP coordination setup scheme," Tech. Rep. IEEE 802.11-24/1217r2, Aug. 2024.
- [7] G. Kim et al., "Multi-AP framework for C-SR," Tech. Rep. IEEE 802.11-24/1514r1, Nov. 2024.
- [8] I. Val et al., "Wi-Fi 8 unveiled: Key features, multi-AP coordination, and the role of C-TDMA," *IEEE Commun. Mag.*, vol. 63, no. 11, pp. 166–173, Nov. 2025.
- [9] J. Haxhibeqiri et al., "Coordinated SR and restricted TWT for time sensitive applications in Wi-Fi 7 networks," *IEEE Commun. Mag.*, vol. 62, no. 8, pp. 118–124, Aug. 2024.
- [10] D. Nunez et al., "Spatial reuse in IEEE 802.11bn coordinated multi-AP WLANs: A throughput analysis," in *Proc. IEEE Conf. Standards Commun. Netw. (CSCN)*, Nov. 2024, pp. 265–270.

- [11] D. Nunez, M. Smith, and B. Bellalta, "Multi-AP coordinated spatial reuse for Wi-Fi 8: Group creation and scheduling," in *Proc. 21st IEEE Mediterr. Commun. Comput. Netw. Conf. (MedComNet)*, Jul. 2023, pp. 203–208.
- [12] D. Nunez et al., "TXOP sharing with coordinated spatial reuse in multi-AP cooperative IEEE 802.11be WLANs," in *Proc. IEEE 19th Annu. Consum. Commun. Netw. Conf. (CCNC)*, Jan. 2022, pp. 864–870.
- [13] F. Wilhelmi et al., "Throughput analysis of IEEE 802.11bn coordinated spatial reuse," in *Proc. IEEE Conf. Standards Commun. Netw. (CSCN)*, Nov. 2023, pp. 401–407.
- [14] S. Merlin et al., "TGax simulation scenarios," Tech. Rep. IEEE 802.11-14/0980r16, Nov. 2015.
- [15] J. Lee et al., "An experimental study on the capture effect in 802.11a networks," in *Proc. 2nd ACM Int. workshop Wireless Netw. testbeds, Experim. Eval. characterization*, Sep. 2007, pp. 19–26.

## BIOGRAPHIES

DAVID NUNEZ (david.nunez@upf.edu) received the Ph.D. degree from Universitat Pompeu Fabra in 2025, focused on developing techniques for improving the performance of wireless networks. His research interests include Wi-Fi and the IoT, with an emphasis on multi-access point coordination techniques for next-generation WLANs. He is currently involved in several international and national research projects on Wi-Fi.

FRANCESC WILHELMI was with Nokia Bell Labs and the Centre Tecnològic de Telecomunicacions de Catalunya (CTTC). He is

currently a tenure-track Professor at Universitat Pompeu Fabra (UPF). His main research interests include Wi-Fi technologies and their evolution, network simulators and network digital twinning, machine learning, decentralized learning, and distributed ledger technologies.

LORENZO GALATI-GIORDANO is currently a Senior Research Engineer at Nokia Bell Labs, producing leading research contributions in the area of massive MIMO and radio systems operating in the unlicensed spectrum. He has more than 15 years of academic and industrial experience on several communication systems, protocols, and standards, resulting in the co-authoring of tens of commercial patents, publications in prestigious books, IEEE journals and conferences, and IEEE 802.11 contributions. He is also leading the research activity on innovative techniques and AI/ML-based optimizations for reliable low-latency communications in Wi-Fi 7/Wi-Fi 8.

GIOVANNI GERACI is currently a Senior Principal Research Lead at Nokia Standards and an Associate Professor at Universitat Pompeu Fabra, Barcelona. His current research focuses on AI/ML for wireless communications and the use of LLMs/agents in telecom. He served as an IEEE Distinguished Lecturer, delivered 100+ international lectures, and received two IEEE early-career awards and three IEEE best paper awards.

BORIS BELLALTA is currently a Full Professor at Universitat Pompeu Fabra (UPF), where he heads the Wireless Networking Group. His research interests include wireless networks and performance evaluation, with emphasis on Wi-Fi technologies and machine learning-based adaptive systems.