

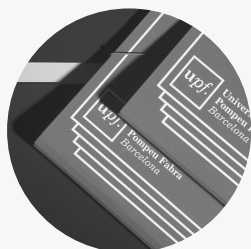
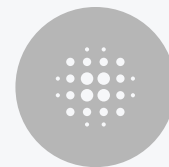
Universitat Pompeu Fabra

Barcelona | Spain

EUROPEAN MASTER IN LAW AND ECONOMICS



WHY STUDY AT POMPEU FABRA UNIVERSITY?



INTERNATIONAL OUTLOOK

- 40% of postgraduates students are international
- 20% of teaching staff are international
- Exchange partnerships with more than 350 universities



HIGH QUALITY UNIVERSITY

- **THE** (2018) #1 in Spain and #17 in the world under 50 years of age
- **THE** (2017) #1 in Spain for international outlook
- **U-Multirank** (2017) #1 in Europe
- **U-Ranking** (2016) #1 in Spain for research quality
- **AQU** Highest satisfaction rate (90%) Employability (90%)



OUR VALUES

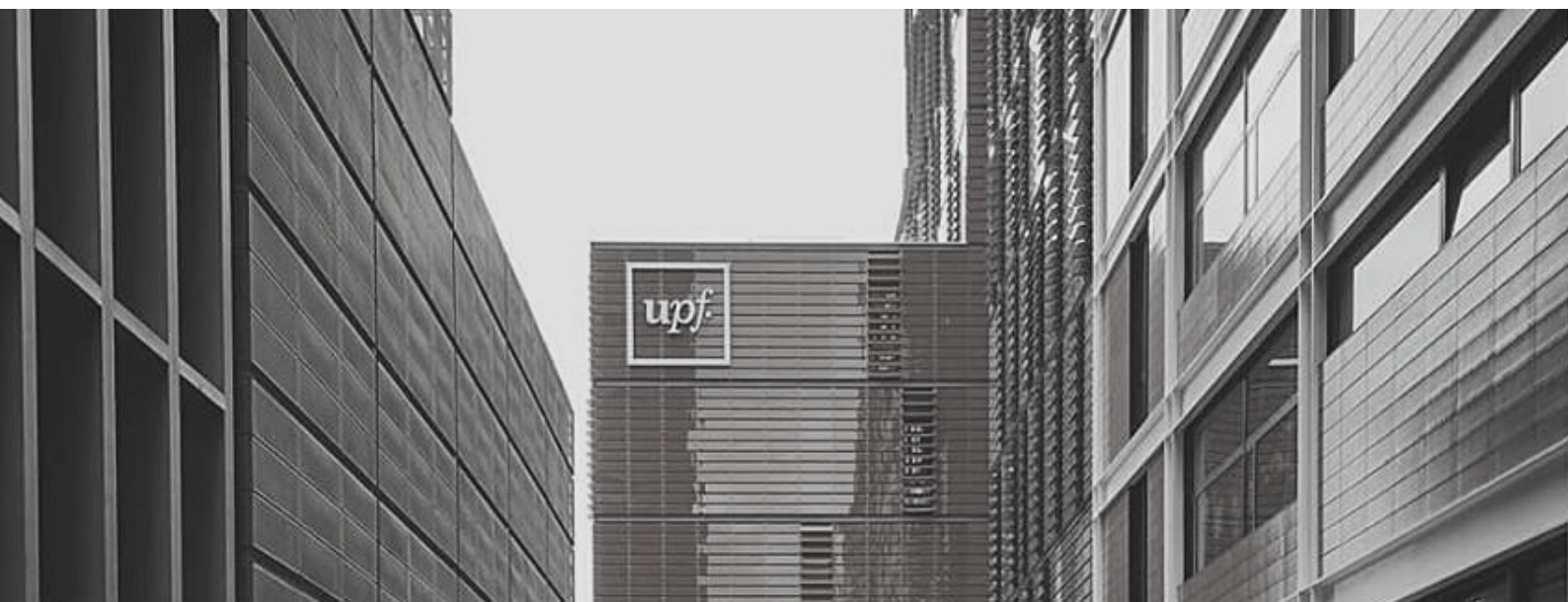
- Plurality
- Social engagement
- Dynamism
- Rigour
- Socially responsible and sustainable university

Become a member of our community!

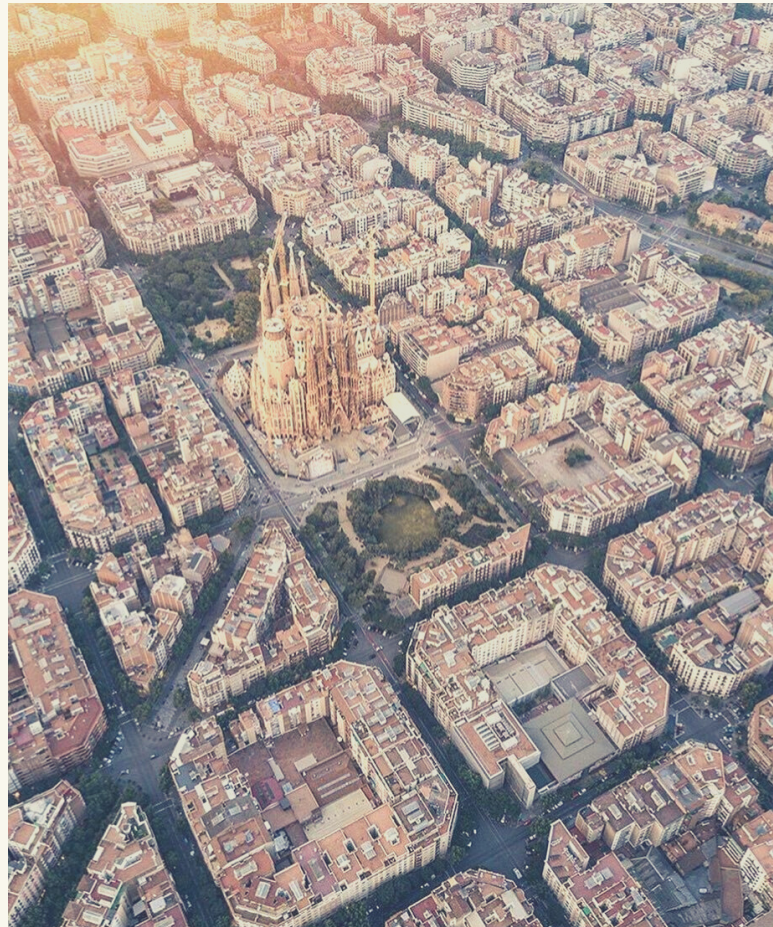
Universitat Pompeu Fabra is a world-leading young university, accredited as an International Excellence Campus and recognized as the best performing university in Spain for the seventh consecutive year. As you may notice, we have built a solid foundation that supports excellence, and fosters strong individuals.

Over the semester at UPF you will not only learn, but also you will broaden your horizons by addressing real issues in a collaborative and thoughtful learning environment. We are strongly committed to deliver an inspirational teaching as well as the highest quality student experience in order to shape ambitious individuals with real vision.

In order to ease your transition to Universitat Pompeu Fabra we have created this guide to orient your experience at the university, its campus and, of course, its city, Barcelona. Also, our staff members will provide you ongoing guidance over the course at the university.



BARCELONA: VIBRANT AND YOUNG



ALWAYS SOMETHING GOING ON

Barcelona is a city for everyone and it has great stuff to offer: golden sand beaches, Gaudi's masterpieces, local gastronomy...



UNIVERSITY CAMPUS



10:30 AM Opening remarks

11:00 AM The artist's introduction



Lessons will take place in the
Campus Ciutadella

- 10** Dipòsit de les aigües
- 13** Ramon Turró building
- 20** Jaume I building
- 23** Mercè Rodoreda building
- 24** Mercè Rodoreda building
- 40** Roger de Llúria building

artist

conts

Book your accommodation

- **BCU (RESA HOUSING):** This is the accommodation service offered by all universities in the area of Barcelona. It offers flats and rooms, in-home stays, short stays, residence halls, etc. For more information and online registration, please contact:

www.resahousing.com / info@bcn-housing-students.com

- **LA CIUTADELLA and CAMPUS DEL MAR** both dorms are located close to UPF's Ciutadella campus, where the EMLE program will take place. Both dorms offer to each student a fully furnished apartment equipped with a bathroom, complete kitchen, heating, telephone and free Internet access.


www.resa.es / resa@resa.es

- **UPF also collaborates with the Barcelona Centre Universitari (BCU)**, an organism offering services relating to extracurricular university life for the community of foreign students studying in Barcelona. This housing service allows you to search its database and make reservations online for free and round off its services with free legal advice on rental contracts. It also provides short-term rental contract service.



Book your accommodation

- **HOUSING ANYWHERE:** is an accommodation platform where UPF students may sublet their accommodation in Barcelona and exchange students who come to UPF may find a place to live during their stay in Barcelona. It is a student-to-student platform where short-length accommodation's supply and demand meet. In order to log in, you must enter your UPF e-mail address, according to this format: name.surname01@estudiant.upf.edu

- 
- **FACEBOOK GROUPS** Some Facebook groups are very useful when looking for accommodation in the city. In the following groups you'll find more students like you offering or looking for accommodation: 'De Pis a Pis', 'Estudiants universitaris que busquen pis a Barcelona' and 'Pis estudiants'.

- **PORTAL 'LIVING IN BARCELONA'** In our portal Living in Barcelona, you can find more useful tips and information about the practical aspects of your stay in Barcelona and at the UPF.

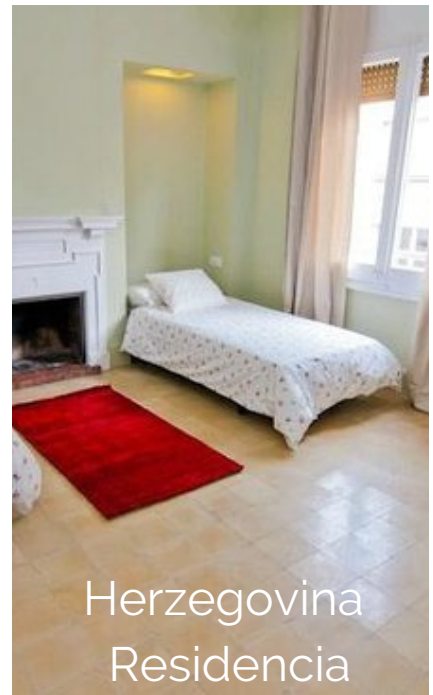




Melon District



ONIX



Herzegovina
Residencia



Residència
Universitària Sarrià



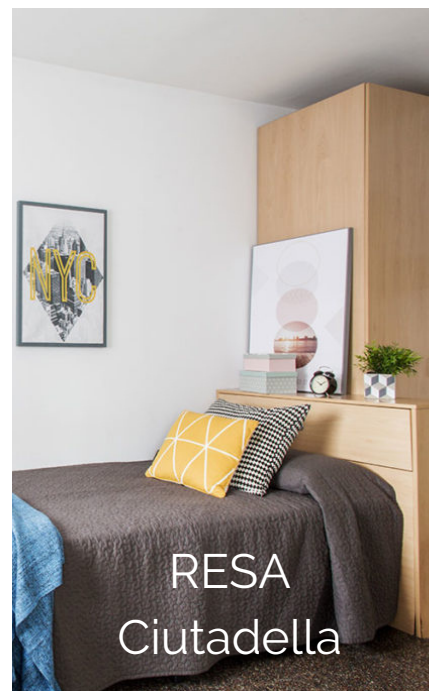
Residència
Àgora



Barcelona
Unihabit Ciutat
Vella



Residència
Reina de la Pau



RESA
Ciudadella



**The Lofttown
Barcelona**

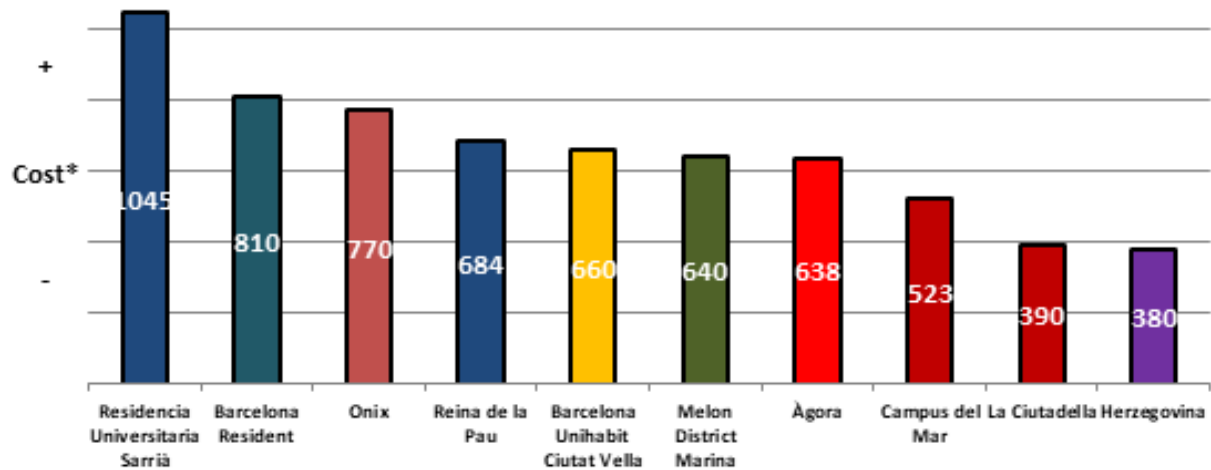


**Residencia
Mestral Mar**

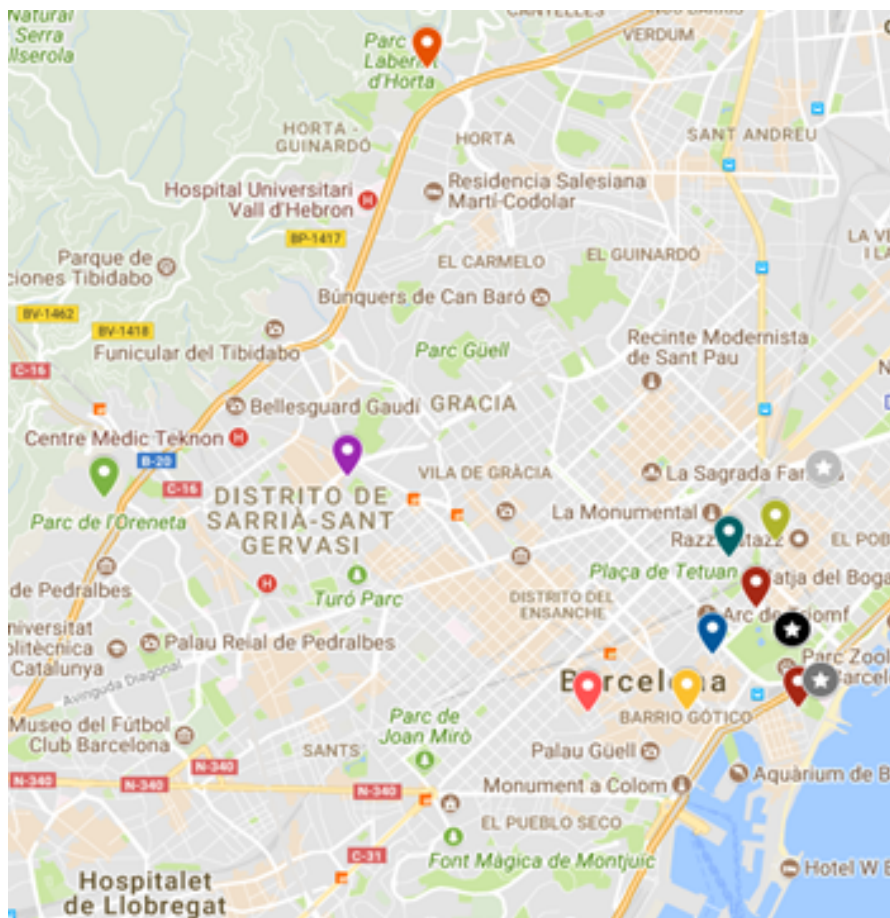


RESA Diagonal

Cost comparison and location



* Cost: estimate price for double room for period of approximately 6 months



- Melon District
- La Ciutadella
- Onix
- Campus del Mar
- Barcelona Resident
- Reina de la Pau
- Barcelona Unihabit Ciutat Vella
- Herzegovina
- Residencia Àgora
- Residencia Universitaria Sarrià
- ★ UPF- Campus Ciutadella
- ★ Upf- Campus Poblenou
- ★ Upf- Campus del Mar

UPF Services

UPF LIBRARIES

Ciutadella

Mon-Friday 8 am - 9 pm

Weekends and holidays 10 am - 9 pm

Poblenou

Mon-Friday 8 am - 9 pm

Mar

Mon-Friday 8 am - 9 pm

*Opening hours may be reduced due to COVID-19. For further information, please check [this link](#)

UNIVERSITY CANTEEN

Located in the Roc Boronat (Poblenou Campus), Jaume I, Roger de Llúria buildings (Ciutadella Campus) and in Campus del Mar. The menu's prices range from 5,15€ to 7,90€. Although they are now closed due to the restrictions, they will reopen as soon as restrictions change. You can check their [opening hours here](#).

SPORTS CULTURAL ACTIVITIES

The university Community Assistance Service (SACU) is in charge of organizing and offering a wide range of activities and other cultural services every academic year. Students can get ETCS credits by taking part (and passing the correspondent assessment) in some of these university activities.



UPF LANGUAGE COURSES

As **EMLE student** you are eligible for partially subsidized language courses offered by Idiomes UPF. Please, note that these language courses have a high volume of demand. We highly recommend you to register for these courses as soon as the registration period starts, even if you have not made it to Barcelona yet.

WHY CHOOSE IDIOMES UPF'S COURSES?

- Course specifically designed for UPF Community members: only international students and workers are eligible to take this course.
- UPF Certificate on completion of the course.





USEFUL CONTACTS

OMA

MON-THUR

10:00 - 13:00

16:00 - 17:00

FRI

10:00 - 13:00H

Mobility and reception office (OMA, 20.063) and Antònia Llull, the person in charge of EMLE's administrative processes (antonia.llull@upf.edu) will do our best to meet your requests

IDIOMES UPF

MON-THUR

9:00 - 14:00

15:30 - 18:00

FRI

9:00 - 14:00H

Register for optional Catalan and Spanish courses at Idiomes UPF. Check their website or contact idiomes@upf.edu

ESN Barcelona UPF is an association formed by students from Universitat Pompeu Fabra. They belong to the biggest European association present in 40 countries and work selflessly to help exchange students and make their life abroad easier and encourage their integration through all kind of social, cultural and leisure activities. Check their website or contact esn@upf.edu.



USEFUL CONTACTS

INTERNATIONAL RELATIONS OFFICE

(+34) 935 4222 063 /
(+34) 935 422 972
uri@upf.edu

MOBILITY AND WELCOME OFFICE

(+34) 935 422 504
oma.incoming@upf.edu

ANTÒNIA LLULL ADMINISTRATIVE SUPPORT

antonia.llull@upf.edu
40.059 (9:00 - 12:30)

STUDENT INFORMATION DESK (PIE)

(+34) 935 422 228
Location: Jaume I building,
at the library's entrance

IDIOMES UPF

(+34) 935 421 921