

# Two populations of coupled quadratic maps exhibit a plentitude of symmetric and symmetry broken dynamics

Ralph G. Andrzejak,<sup>1,2</sup> Giulia Ruzzene,<sup>1</sup> Eckehard Schöll,<sup>3</sup> and Iryna Omelchenko<sup>3</sup>

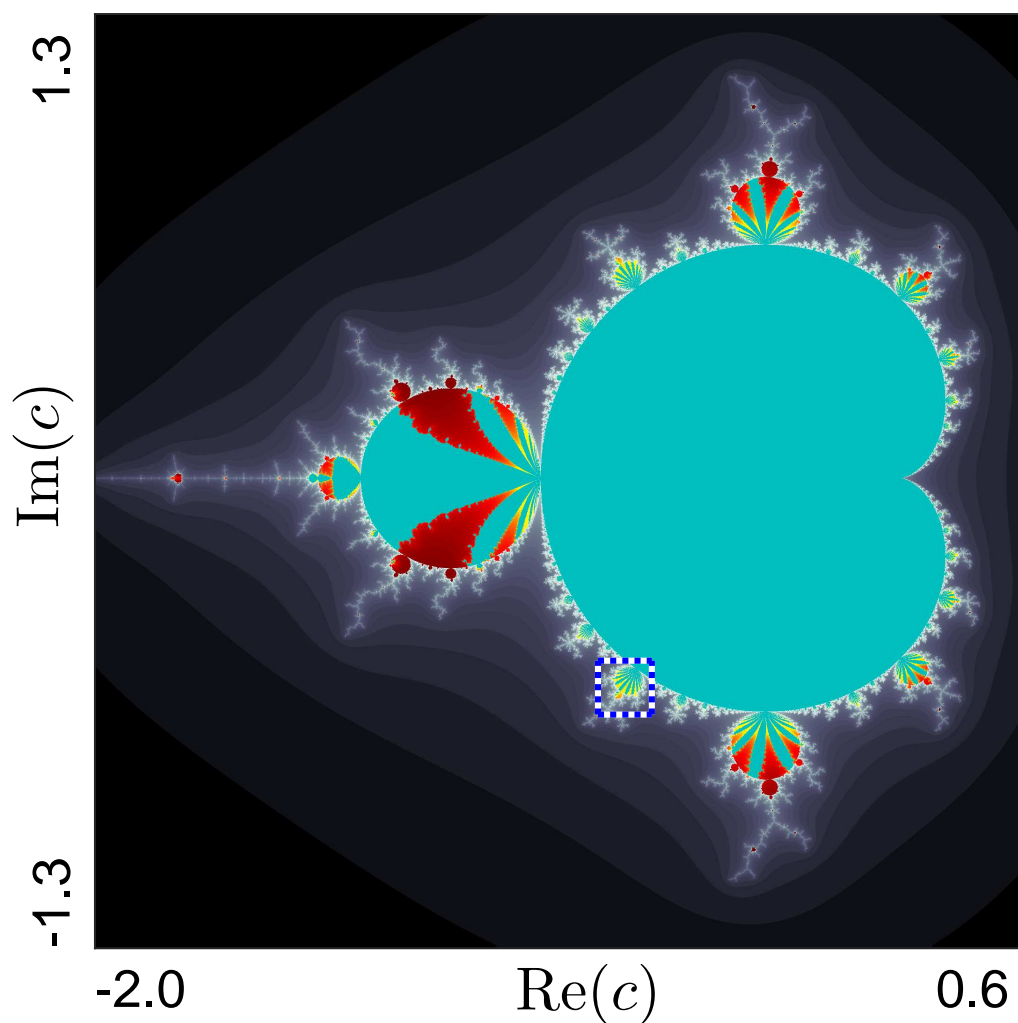
<sup>1</sup>*Universitat Pompeu Fabra, Department of Information and Communication Technologies, Barcelona, Catalonia, Spain*

<sup>2</sup>*Institute for Bioengineering of Catalonia (IBEC), Barcelona, Catalonia, Spain*

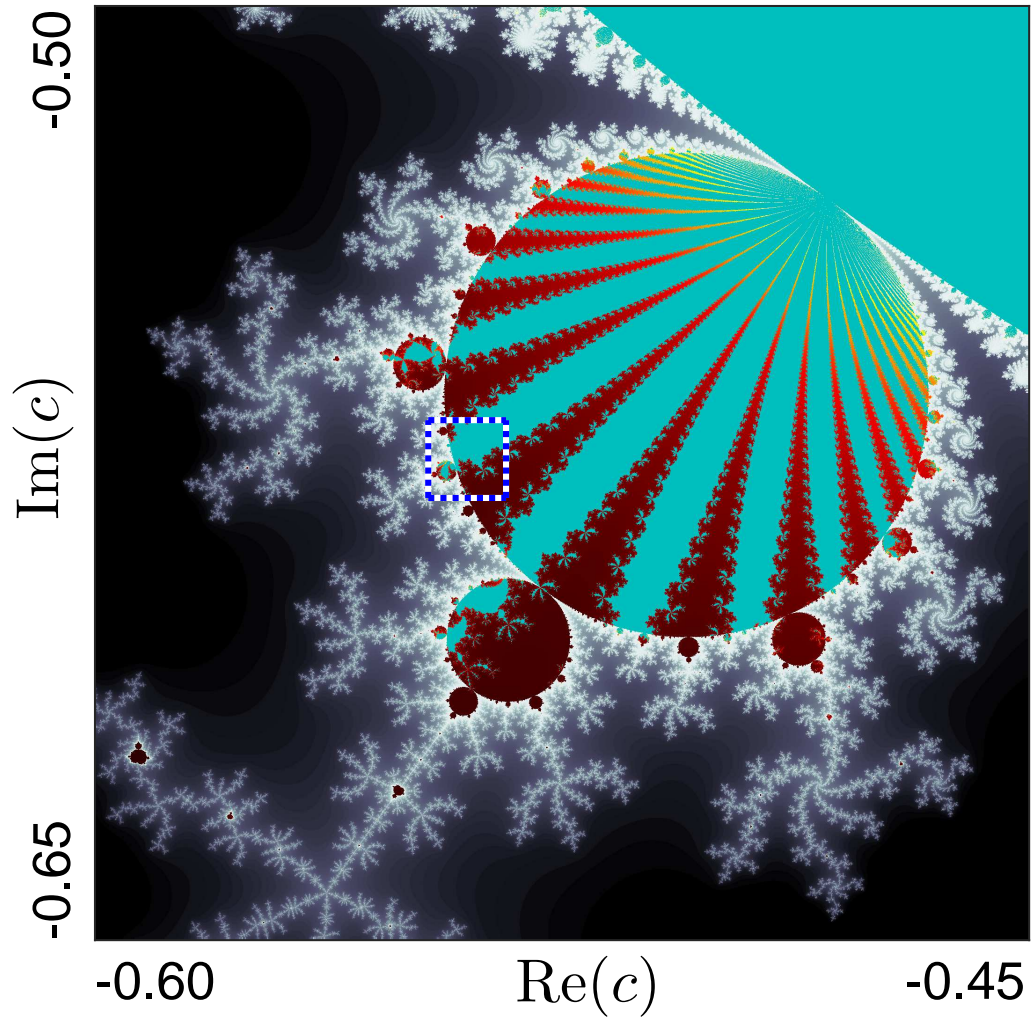
<sup>3</sup>*Institut für Theoretische Physik, Technische Universität Berlin, Hardenbergstrasse 36, 10623 Berlin, Germany*

(Dated: 23 January 2020)

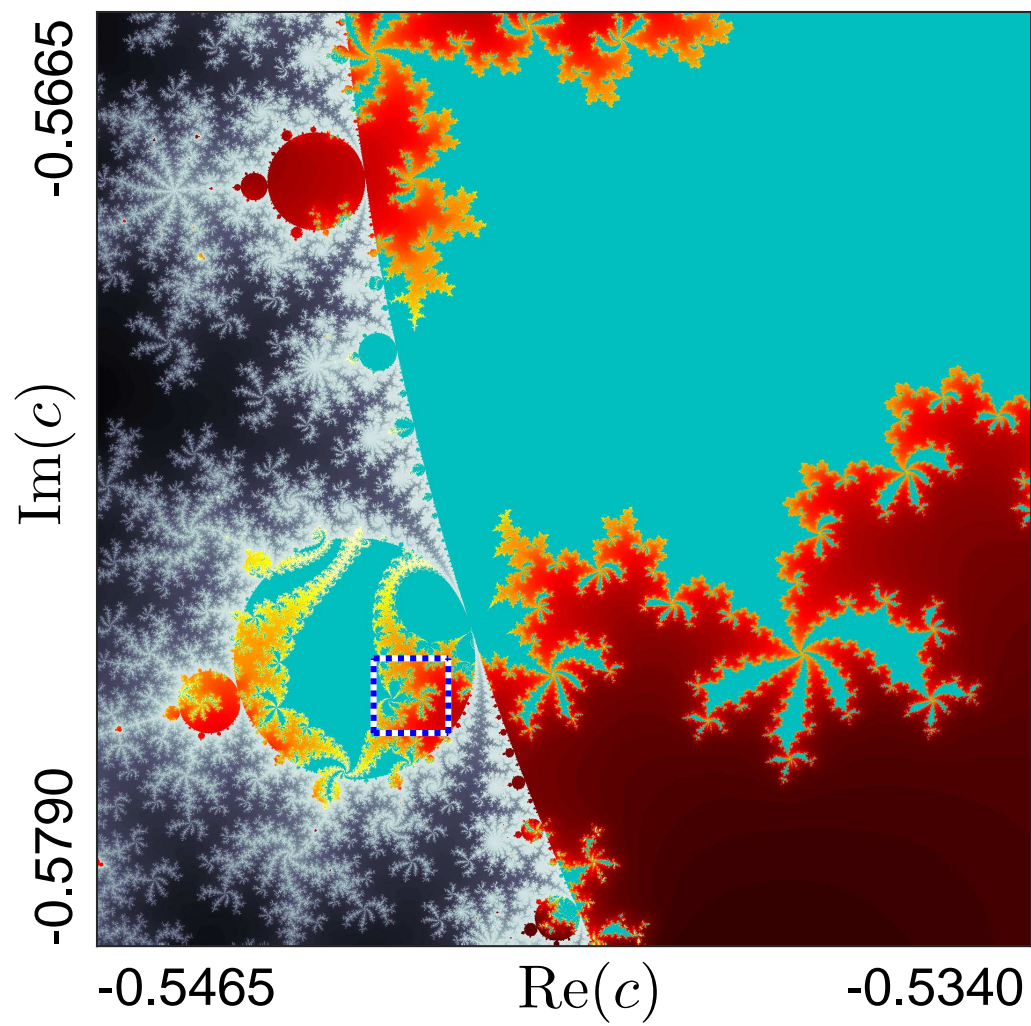
## I. SUPPLEMENTARY FIGURES



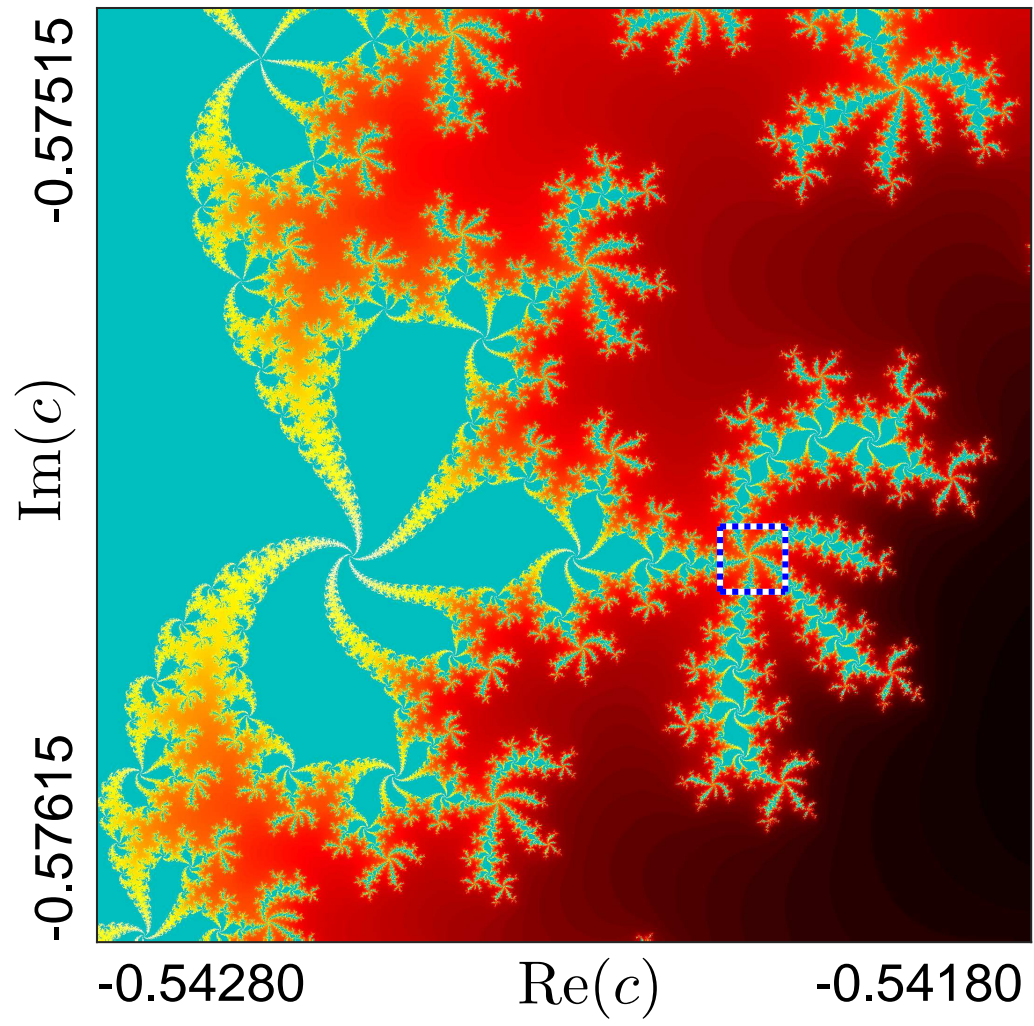
Supplementary Figure 1. Amplified view of Fig. ??(a)



Supplementary Figure 2. Amplified view of Fig. 6(b)

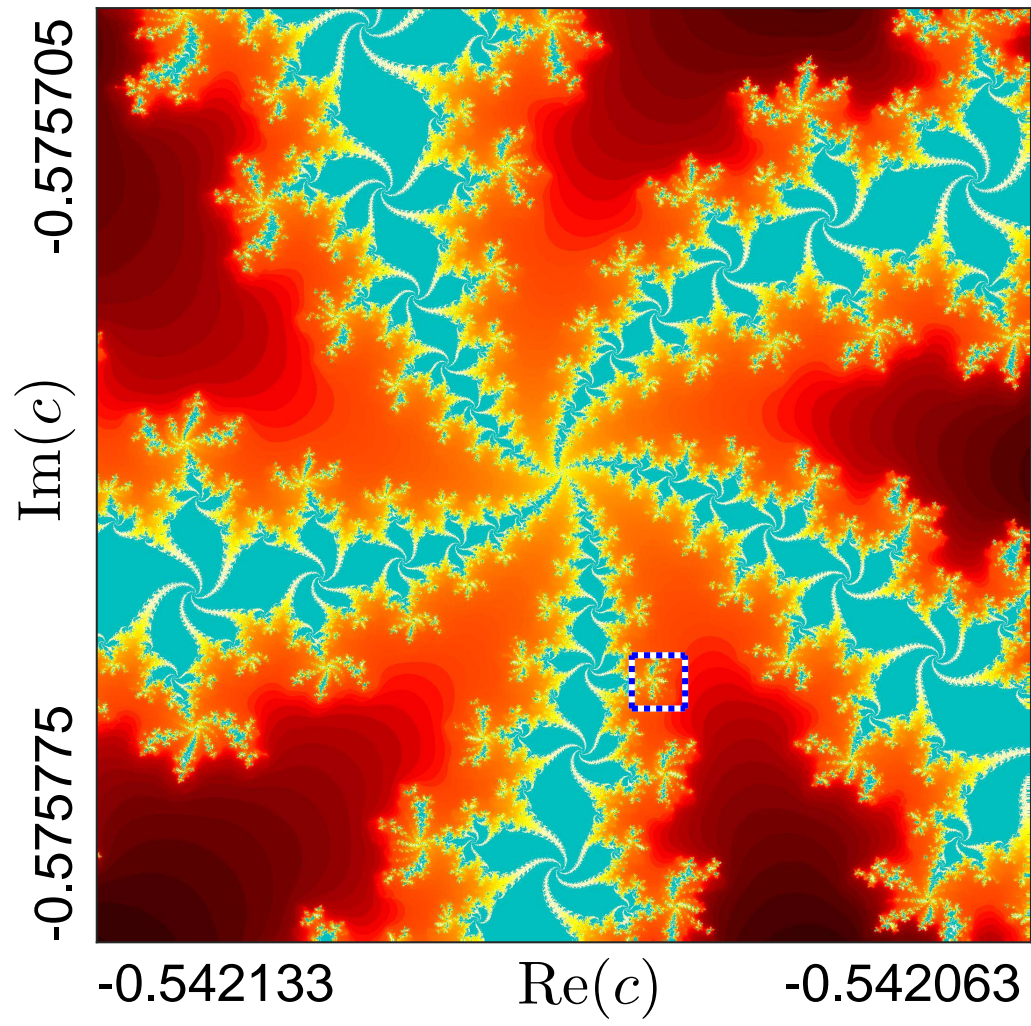


Supplementary Figure 3. Amplified view of Fig. 6(c)

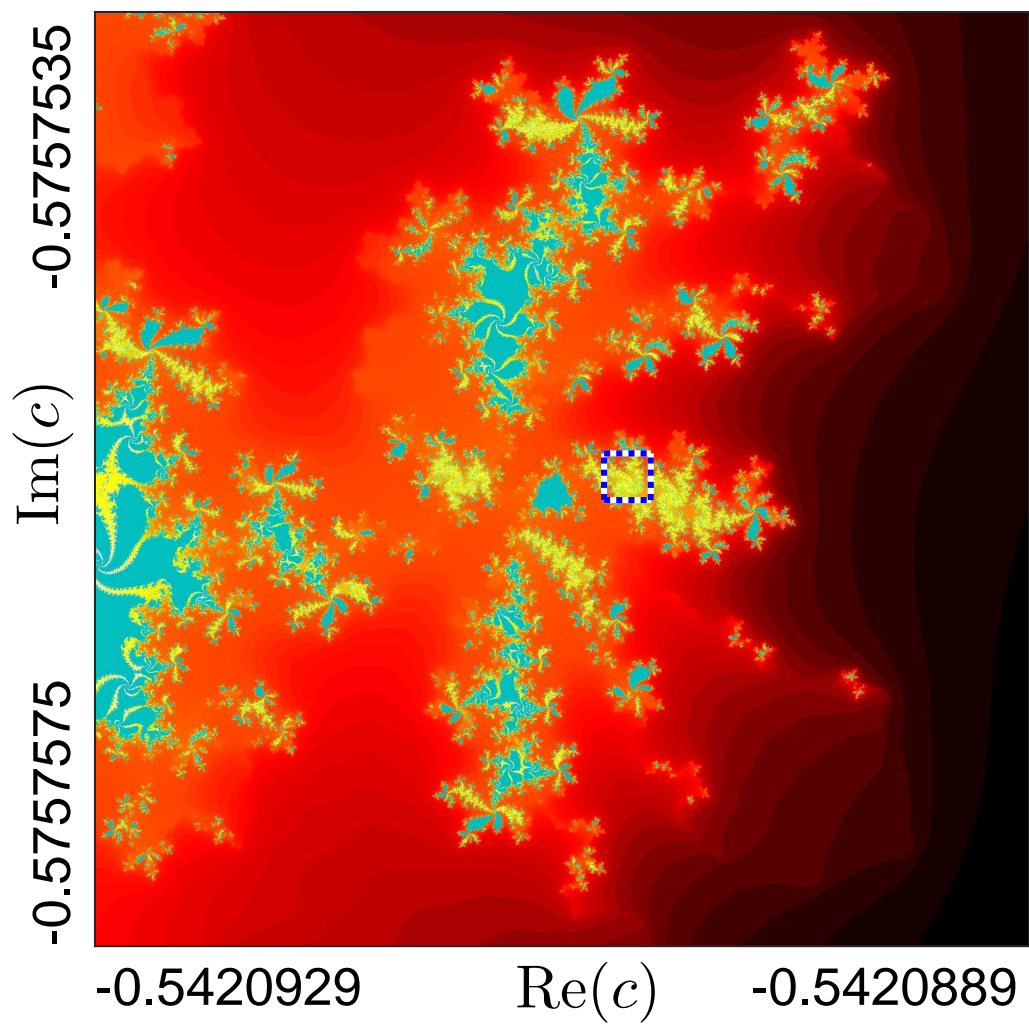


Supplementary Figure 4. Amplified view of Fig. 6(d)

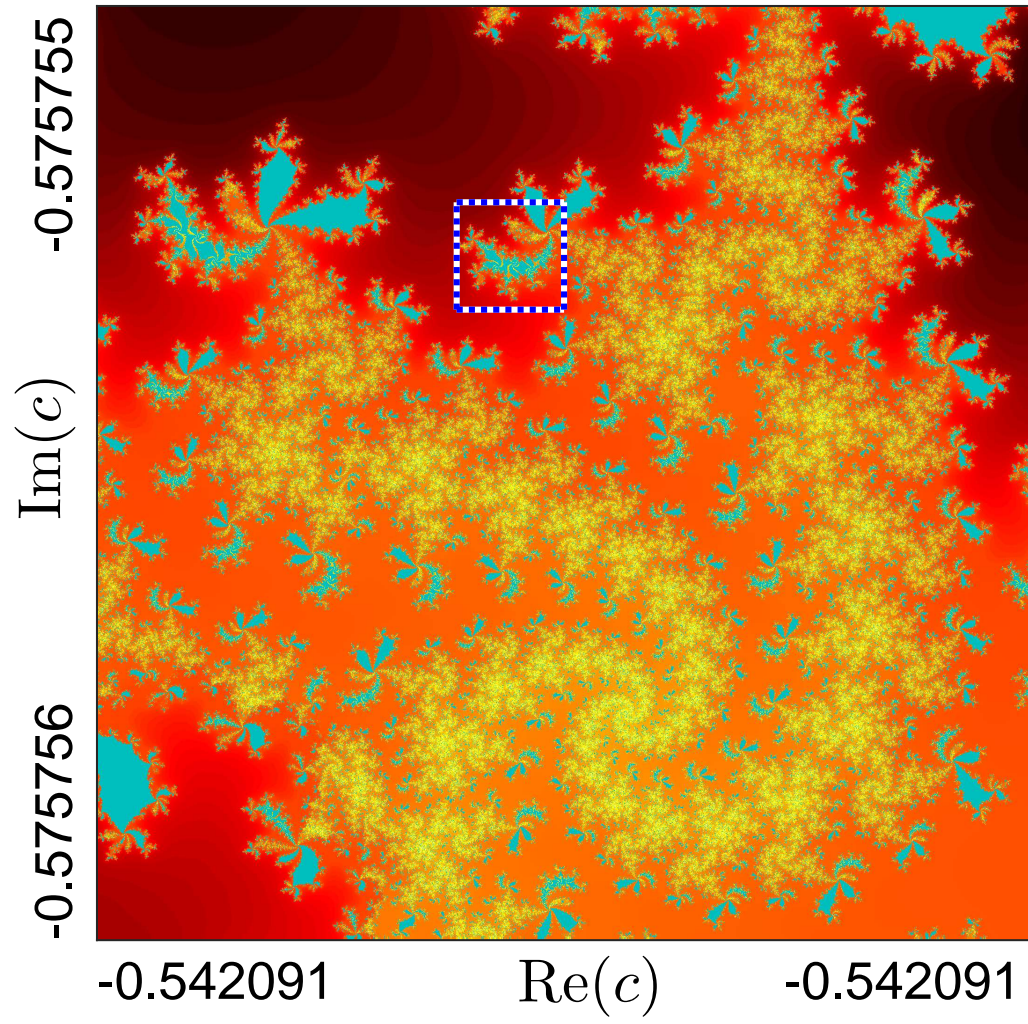




Supplementary Figure 5. Amplified view of Fig. 6(e)

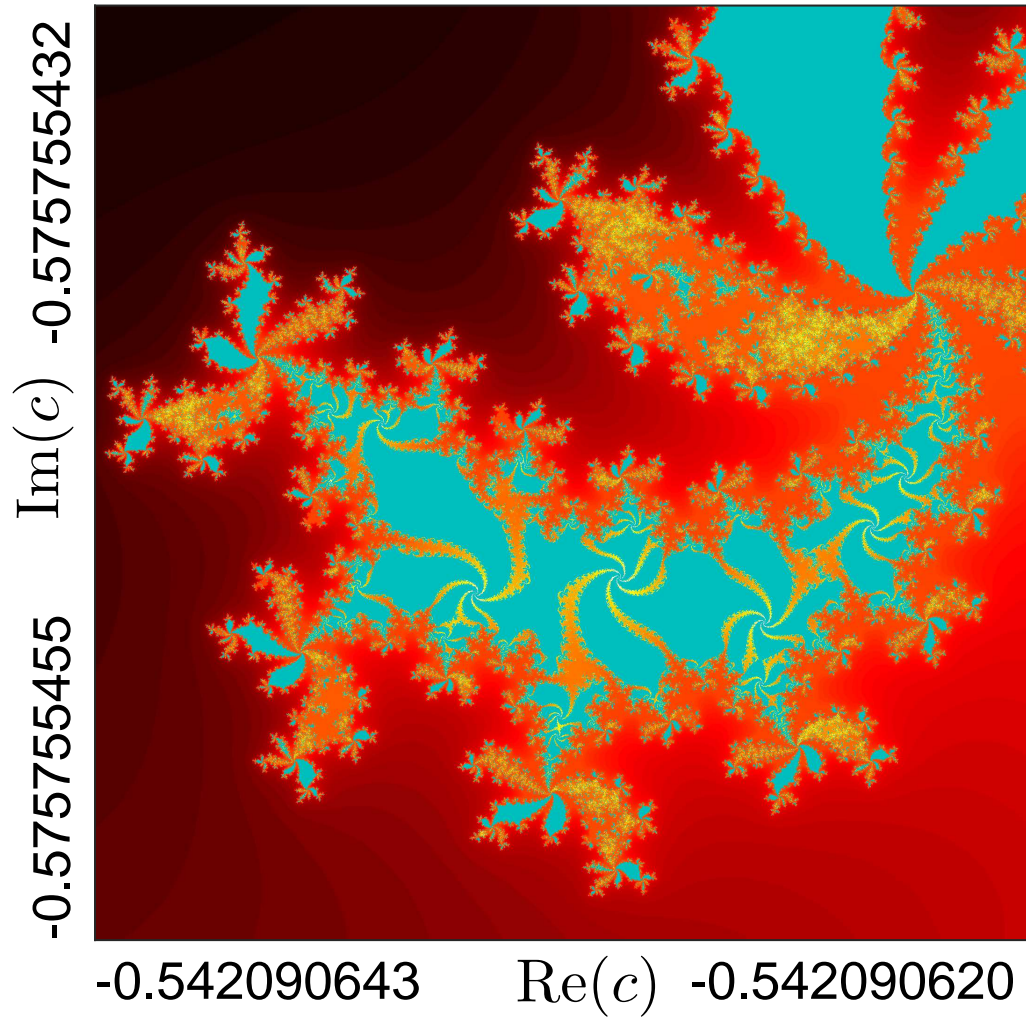


Supplementary Figure 6. Amplified view of Fig. 6(f)



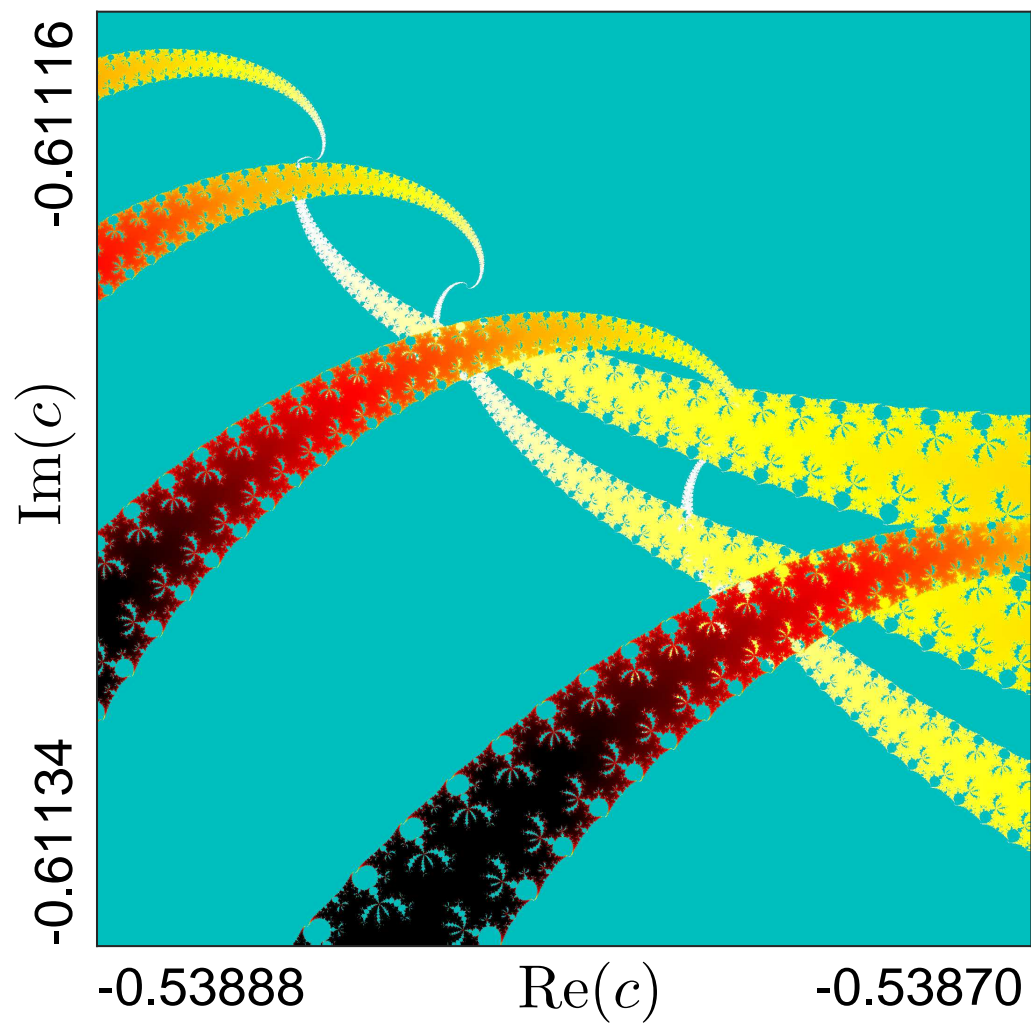
Supplementary Figure 7. Amplified view of Fig. 6(g)



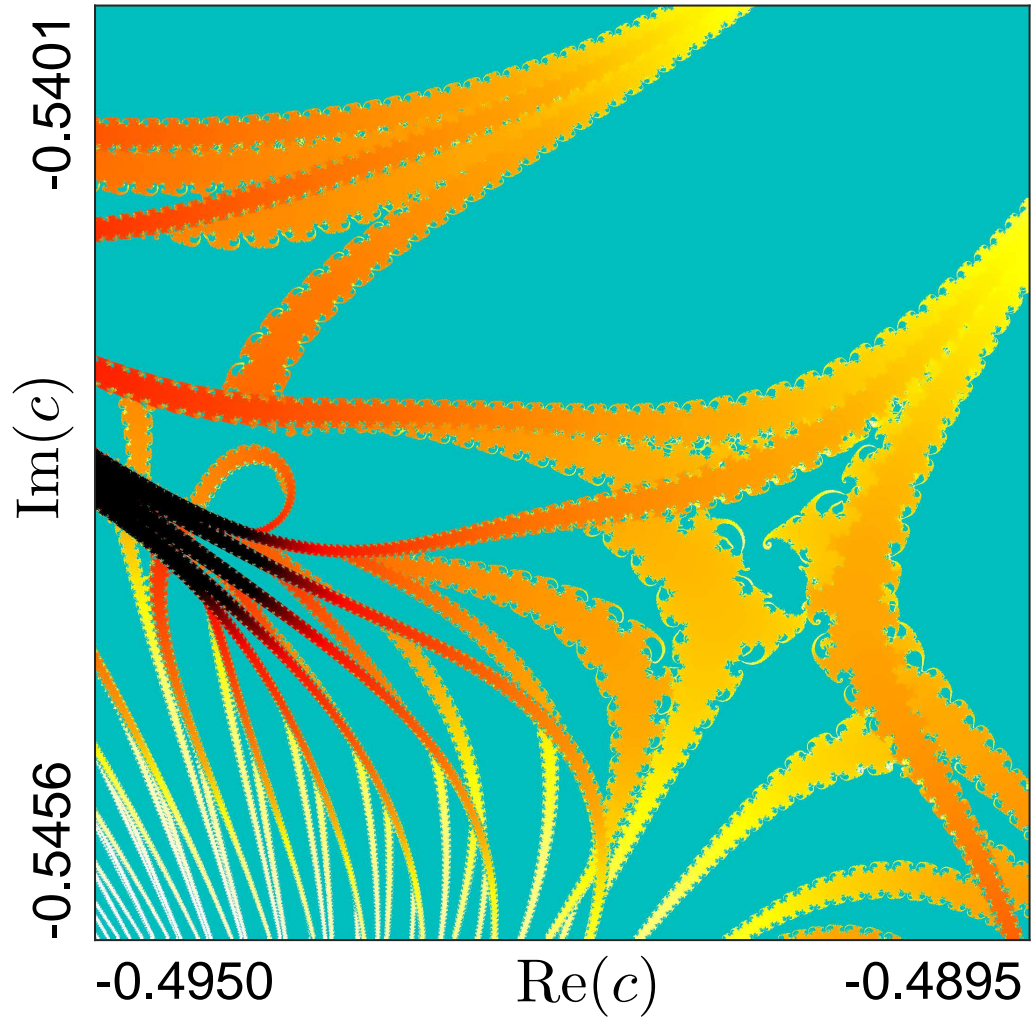


Supplementary Figure 8. Amplified view of Fig. 6(h)

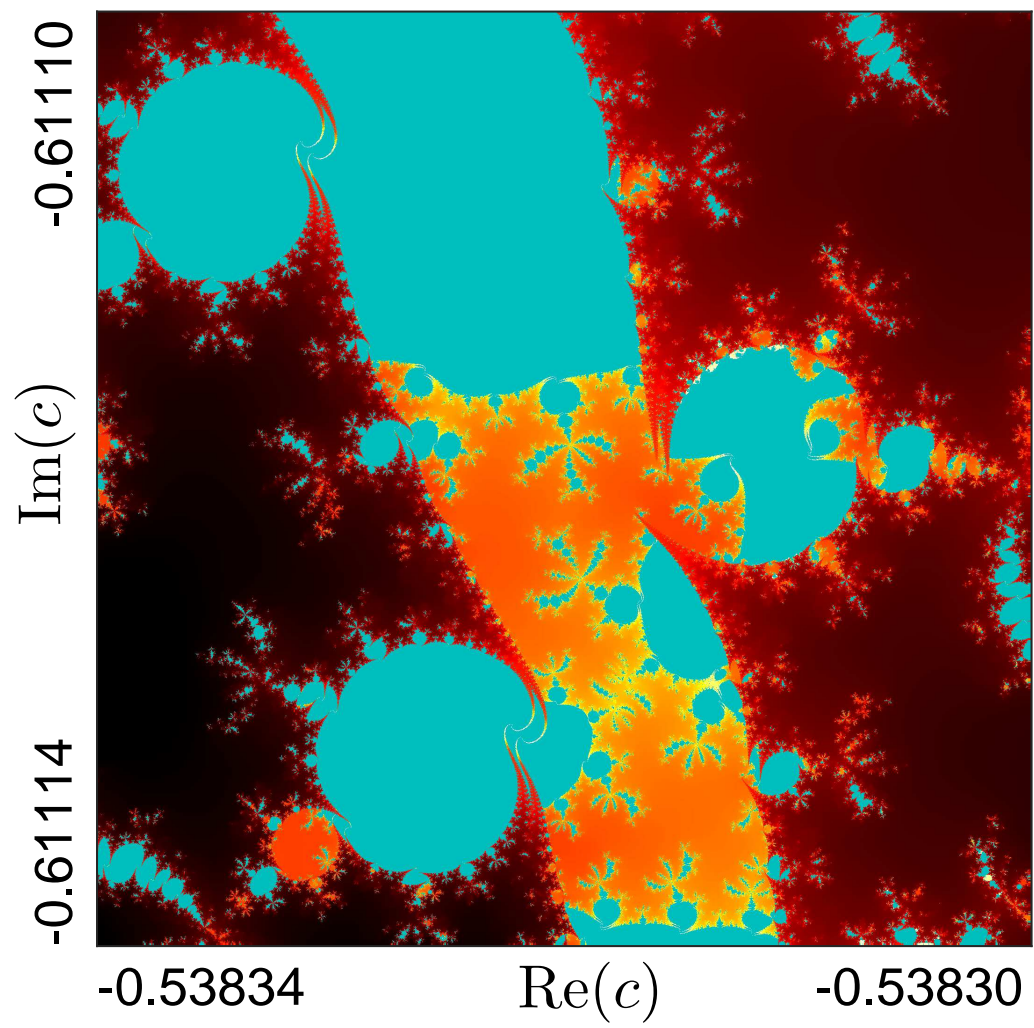




Supplementary Figure 9. Amplified view of Fig. 6(i)

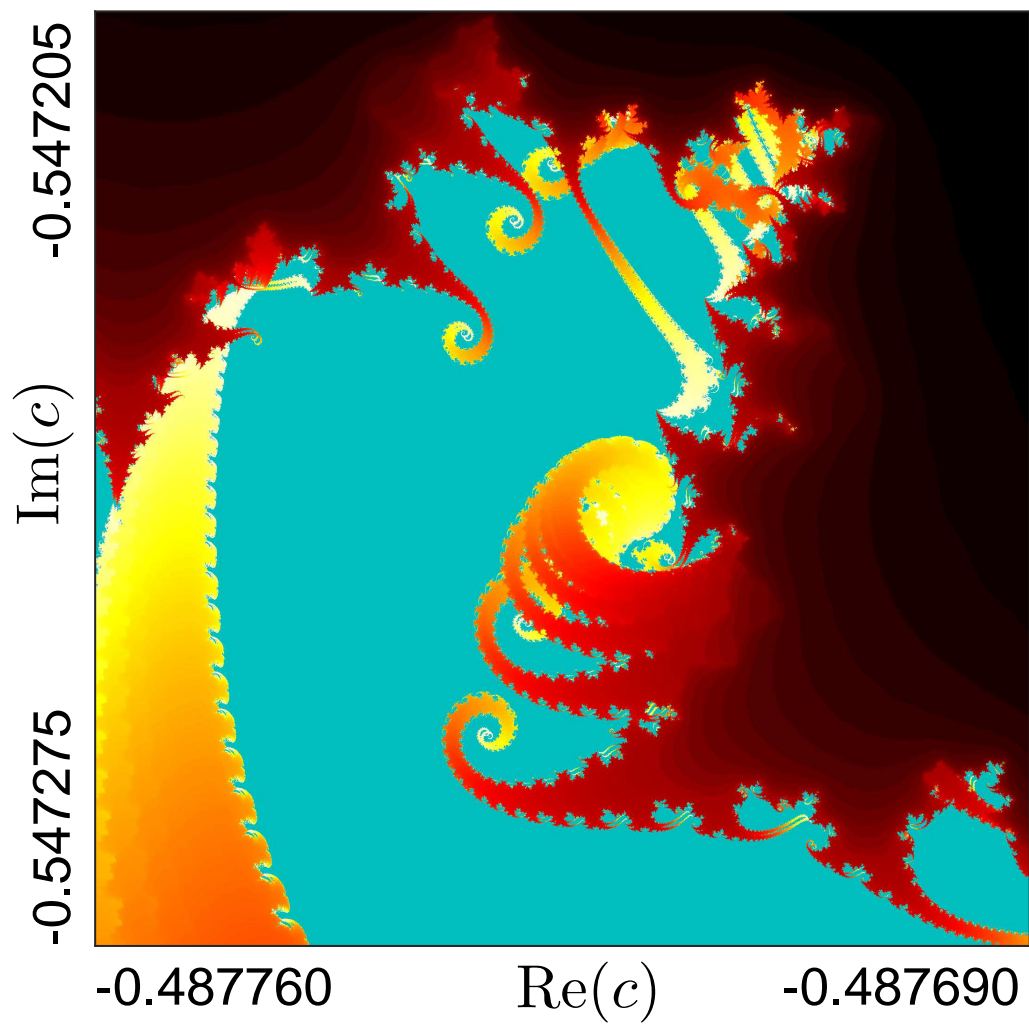


Supplementary Figure 10. Amplified view of Fig. 6(j)



Supplementary Figure 11. Amplified view of Fig. 6(k)





Supplementary Figure 12. Amplified view of Fig. 6(l)