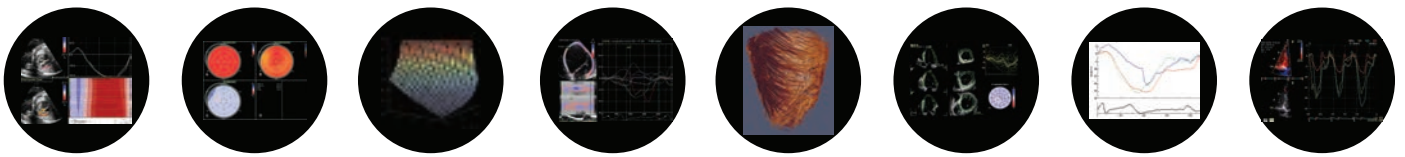


May 18-19, 2017 - BARCELONA



## 4th Barcelona Myocardial Strain Hands-on



Directors:

Bart Bijnens & Marta Sitges, Barcelona; Maja Cikes, Zagreb

The **4th Barcelona Myocardial Strain Hands-on** will be organised in Barcelona, on **Thursday 18th and Friday 19th of May 2017**.

This course provides a thorough overview and hands-on experience in myocardial strain analysis (speckle tracking as well as Tissue Doppler-based). The concepts of the strain analysis, together with tips-and-tricks for the processing, will be presented using **illustrative patient cases** and enriched with pathophysiologic knowledge of cardiac mechanics and ventricular remodelling to provide advanced interpretation for clinical practice or research projects. Participants get plenty of time for **hands-on analysis of cases provided** as well their **own cases** to analyse them under supervision of the experts.

### Thursday, May 18, 2017

Session I	General concept and working on normal hearts
09.00 - 09.05	Opening
09.05 - 09.35	Strain analysis on EchoPac - Concepts and demonstration
09.35 - 10.20	Normal cases analysed by participants
10.20 - 10:35	Interactive wrap-up
10.35 - 11.00	Coffee break
Session II	Hypertrophic hearts
11.00 - 11.30	Hypertrophic hearts - Concepts and demonstration
11.30 - 12.15	Hypertrophic cases analysed by participants
12.15 - 12:30	Interactive wrap-up
12.30 - 14.00	Lunch
Session III	Thin myocardium
14.00 - 14.30	Thin myocardium- Concepts and demonstration
14.30 - 15.15	CAD and HF cases analysed by participants
15.15 - 15:30	Interactive wrap-up
15.30 - 16.00	Coffee break
Session IV	LBBB and CRT
16.00 - 16.30	LBBB and CRT - Concepts and demonstration
16.30 - 17.15	LBBB and CRT cases analysed by participants
17:15 - 17:30	Interactive wrap-up

### Friday, May 19, 2017

Session V	Valve diseases
09.00 - 09.30	Valve diseases - Concepts and demonstration
09.30 - 10.15	Valve disease cases analysed by participants
10.15 - 10.30	Interactive wrap-up
10.30 - 11.00	Coffee break
Session VI	The RV
11.00 - 11.30	RV - Concepts and demonstration
11.30 - 12.15	RV cases analysed by participants
12.15 - 12:30	Interactive wrap-up
12.30 - 14.00	Lunch
Session VII	Cases from the participants
14.00 - 16.15	Analysis of cases brought by the participants
16.15 - 16.30	Course wrap-up

### Venue:

Universitat Pompeu Fabra - Communication campus - Poblenou  
Roc Boronat, 138 - 08018 Barcelona, Spain

### Registration Fee

Regular:

Students and Technicians:

### Early bird until April 1

€ 450

€ 300

### Late registration from April 1

€ 550

€ 450

**All information and online registration: [www.bcn-strain.com](http://www.bcn-strain.com)**