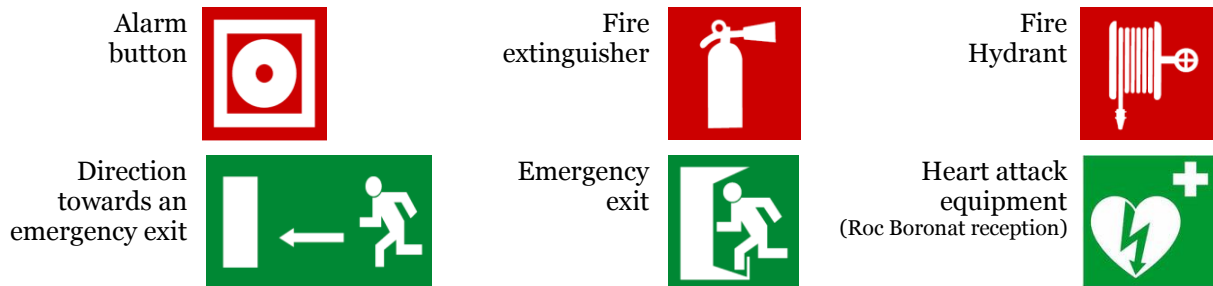


Identification of the buildings

These instructions affect La Fàbrica, La Nau and Roc Boronat buildings

Identification of the collective protection means

The specific collective protection means can be found in the hallways with the following signs:



What to do in case of fire

1. **Protect yourself** from the fire to avoid exposing yourself to the smoke being given off.
2. **Raise the alarm** as soon as possible, by calling the campus emergency numbers:

2201

or

1545

Roc Boronat Reception

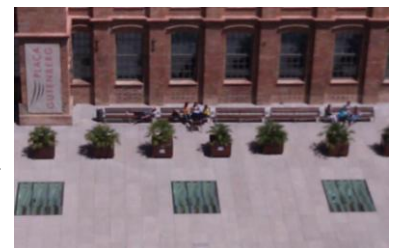
Alarms Coordination Center

You can also raise the alarm by pressing one of the alarm buttons.

3. If necessary, and only if you feel capable of doing so, **try to put the fire out** by using an extinguisher. Follow the instructions and means of protection specified on the label.

What to do if you hear the evacuation siren

1. **Follow evacuation routes signed**, which will take you to the nearest emergency exit. Do it quickly but without running.
2. **Do not block the emergency exits** on leaving the building.
3. **Proceed to the assembly point** foreseen, the **GUTENBERG SQUARE**.
4. **Remain at the assembly point** and await further instructions.



What to do in case of accident

1. **Protect yourself** from the risk that caused the accident to avoid becoming a victim.
2. **Raise the alarm** as soon as possible, by calling the campus emergency numbers (**2201** or **1545**).

If the accident is serious or very serious, call this number first:

112



3. **Help** the injured person, if you can, or keep him company until the health care professionals come.