

PRINCIPAL INVESTIGATOR

Prof. Verónica Benet-Martínez

veronica.benet@upf.edu

RESEARCH TEAM

Eva Maciocco

eva.maciocco@upf.edu

Lydia Repke

lydia.repke@upf.edu

For more information contact

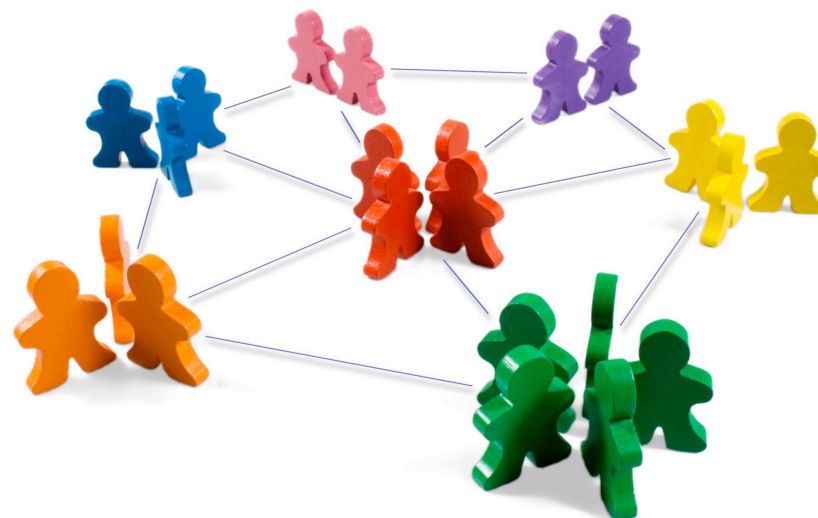
Eva Maciocco

eva.maciocco@upf.edu

Project financed by

DO YOU FEEL CATALAN AS WELL?

Cultural Self-Identification(s) and Personal Social Networks of Immigrants and Their Second Generation



PROJECT DESCRIPTION

This project investigates the relationship between personal social networks and the cultural self-identification(s) of both first and second generation immigrants living in Catalonia. In particular, the project analyzes:

- How easy (or difficult) it is for immigrants and their children to maintain **a sense of belonging to their culture of origin** and to also develop **a sense of belonging to the local cultures** (e.g., Barcelona, Catalonia, Spain).
- The social relationships of the people in the host country **to gain insight into the intercultural factors** that can make these processes easy or difficult.
- How **to improve the well-being and social inclusion** of immigrants and their children currently living in Catalonia.
- How to detect and **reduce discrimination and acculturative pressures** originating from the host society or ethno-cultural communities.

HOW THE PROJECT OPERATES

The project has developed a **survey** that lasts approximately **60 minutes**. Each participant in the study will be compensated with **15 euros** for his/her participation. All the information provided by the participant will be completely confidential and is under the protection of statistical secrecy. The project has formally subscribed to all Pompeu Fabra University (UPF) research ethic principles.

WHO CAN PARTICIPATE IN THE SURVEY?

- **Anyone of Ecuadorian, Moroccan, Pakistani and Romanian origin** above the age of 17 who has been living in Catalonia for **at least 5 years**. You must also have a **good knowledge** of one of the two languages of the host country (**Spanish or Catalan**).
- **Anyone of Ecuadorian, Moroccan, Pakistani and Romanian origin** above the age of 17 who was **born** or raised from an **early age** in Spain.

HOW CAN YOU PARTICIPATE?

- Our research team can come to your facility to carry out the survey. This option is recommended as it enables the participants to take the survey in the comfort of their own environment.
- Participants can also come to our office at Pompeu Fabra University (UPF) to participate in the survey. In this case, they should register ahead of time. To do so, please, contact Eva Maciocco via eva.maciocco@upf.edu or at one of the following telephone numbers: (+34) 93 542 2701 or (+34) 698 518 935.

ADDED VALUE

The study is framed in a psychological perspective (social and transcultural psychology). It proposes a new vision of the acculturation processes focused on (1) the multidimensionality, diversity, and dynamics of **cultural identities**, (2) the importance of **personal networks** and (3) the **cognitive** and **social capital** of people. Moreover, the research aims to provide data that could contribute to the design and implementation of **intercultural policies and practices**.